

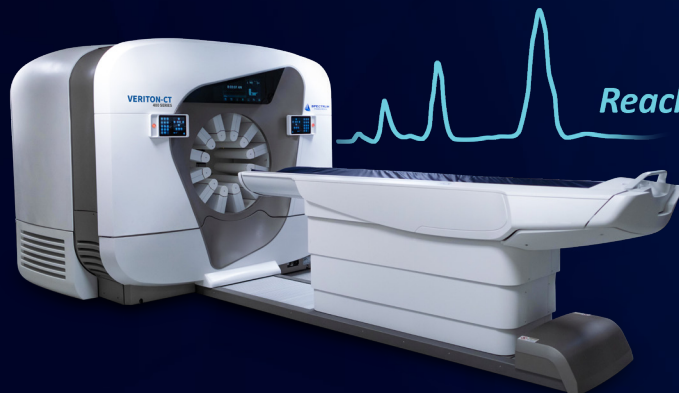


SPECTRUM
DYNAMICS MEDICAL

VERITON-CT[®] Series

Access the benefits of 360° digital SPECT/CT for the full range of Nuclear Medicine clinical applications, plus throughput, scanner versatility, and capabilities for new applications.

State-of-the-art digital SPECT and SPECT/CT scanners provide the foundation for the next generation of clinical applications and the shift to routine 3D imaging. Significant improvements in sensitivity and resolution drive a paradigm shift in workflow and diagnostic capabilities. Clinical users highlight their experience in this digital transformation.



*Reaching Higher Peaks
with Digital SPECT/CT Imaging*

www.spectrum-dynamics.com



SPECTRUM
DYNAMICS MEDICAL

Transform Your Nuclear Medicine Department

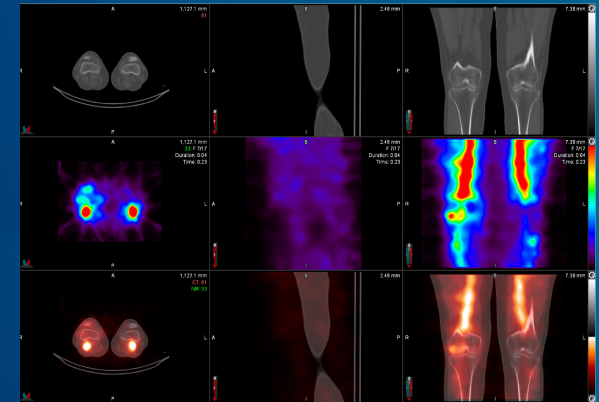
Access the benefits of 360° digital SPECT/CT for the full range of Nuclear Medicine clinical applications.

Nuclear medicine requires modernization to continue to thrive. Upgrading from analog technology to digital SPECT/CT lets you perform faster scans, achieve higher quality images, and reap all the benefits of digital technology.

Spectrum Dynamics' VERITON-CT Series combines the best-in class CZT detectors, novel system design, high resolution CT, and advanced image reconstruction algorithms with high energy imaging up to 400keV. With fast 3D Total Body scanning you have quantitation-ready images in under 30 minutes.

With VERITON-CT, nuclear medicine care centers worldwide can:

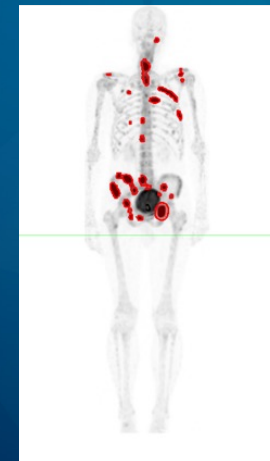
- Scan the full range of radionuclides used in Nuclear Medicine
- Optimize for efficient 3D imaging: organ focused or Total Body
- Rely on consistent and efficient imaging protocols for scanner throughput and patient care



Real-Time 4D SPECT/CT



3D Total Body SPECT/CT



Tumor Burden Summary	2021-07-27 SUVbw
Uptake Time (hr)	2.9
Volume (ml)	388.6
Max	129.1
Mean	14.9
TLA (mean*ml)	5798.2

3D Quantitative Analysis



Transform Your Technology

The gold standard of 360° CZT Digital SPECT/CT

Spectrum Dynamics' unique implementation of CZT solid-state detectors has established the design as the gold standard of CZT-based SPECT cameras used in Nuclear Medicine.

The VERITON-CT SPECT/CT integrated digital platform handles routine 3D workflow to streamline and optimize every step, from image acquisition to advanced quantitative reconstruction to data analysis and review. It is designed to support nuclear medicine diagnostic imaging and research applications with its superior energy resolution, sensitivity and multi-energy imaging capabilities.

When you invest in VERITON-CT, you configure CT scanner slice options and energy range to suit your budget and throughput requirements.

Gantry Specifications

Detector #	12
Max bore size	80cm
Min bore size	23cm
Axial Field of View	32cm
Energy range	40 – 400keV

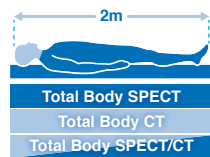
Table specifications

NM/CT scan range	2.0m
Max weight	500lbs / 226kg



BroadView Technology

High sensitivity swiveling digital detectors



Total Body 3D Imaging

200cm hybrid scan range, real-time body contour



Wide Bore SPECT/CT

80cm NM and CT



16/64

High Resolution CT

Choice of 16sl or 64sl, low dose CTAC



TruView Console

Acquisition, reconstruction and advanced quantitative analysis in one location



Performance

Reaching new peaks in digital SPECT imaging up to 400keV



SPECTRUM
DYNAMICS MEDICAL

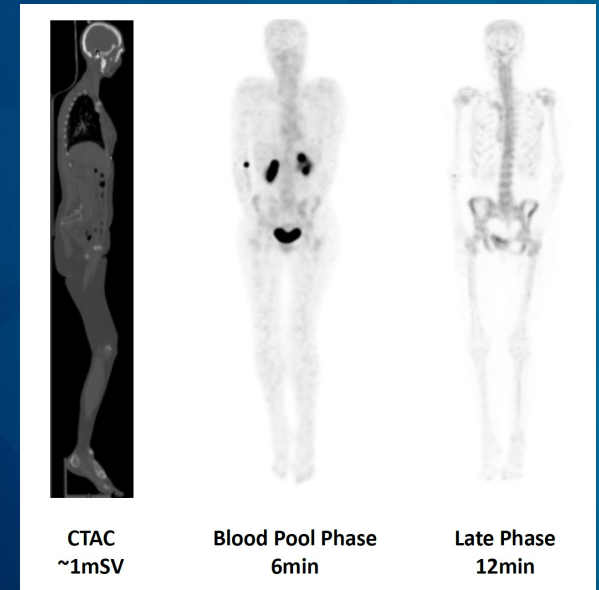
Transform Your Workflow

Streamlined Clinical Care Path, no compromises

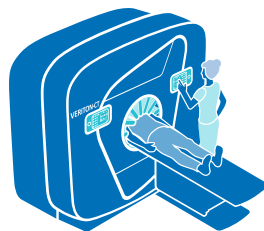
Spectrum Dynamics integrated its groundbreaking Broadview Technology design into the VERITON-CT system, providing a digital platform that improves the clinician's ability to guide clinical therapy, improve clinical outcomes, and enhance the patient experience – all in one place. Significant improvements in sensitivity and resolution drive a paradigm shift in workflow.

Our hybrid workflow provides:

- CT-Based SPECT Scan Optimization
- Quantitative Reconstruction
- 4D Dynamic Acquisition and Post Processing
- Advanced Reconstruction Options
- Advanced CT Image Quality Options



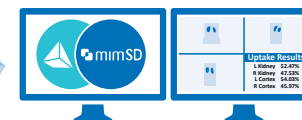
Digital Technology
360° design for high sensitivity and coverage



Workflow is reproducible and optimized for patient needs



Image quality tools in TruView Console for advanced reconstruction and artifact reduction for both NM and CT data



Quantitative analysis accessible in TruView Console integration with MIM-SD platform



Comprehensive results from transformative technology that provides a greater volume of high quality data for informed decision-making



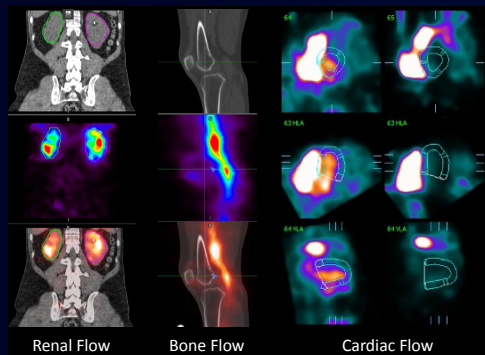
SPECTRUM
DYNAMICS MEDICAL

Evolve with the Industry

VERITON-CT Series brings routine 3D scanning to your imaging department

Don't let your imaging department get left behind. With a state-of-the-art VERITON-CT Series SPECT/CT scanner, you have the foundation for growth, with the technology for new types of procedures and patients. Execute the next generation of clinical applications, add new imaging capabilities, and shift to routine 3D imaging for Total Body and other imaging applications.

Spectrum Dynamics delivers continuous innovations to keep your department on the leading edge of Nuclear Medicine imaging.



TruFlow Dynamic Imaging

Now, with TruFlow dynamic imaging, VERITON-CT offers real-time 4D imaging to capture the radiopharmaceutical distribution, uptake, or clearance over time in 3D SPECT/CT quantitative imaging. Clearly identify and localize abnormalities.



SPECTRUM
DYNAMICS MEDICAL

Contact Us

Spectrum Dynamics Medical appreciates the opportunity to share our Nuclear Imaging solutions with you. To learn more about our products, services and how we can help you, please contact us.

**Spectrum Dynamics
Medical HK Limited**
5 Canton Road Suite 1729A
Ocean Center
Tsim Sha Tsui, Kowloon,
Hong Kong

**Spectrum Dynamics
Medical SA**
Rue de Lausanne, 31
1110 Morges Switzerland
Tel: +41 21 544 4710
Fax: +41 21 544 4711

**Shanghai Guangmai
Medical Technology
Limited**
708, Block A, No. 300,
Shuiyun Road, Pudong New
District, Shanghai, China.
Tel: 021-58281680

**Spectrum Dynamics
Medical, Inc.**
301 North Cattlemen
Road, Suite 109
Sarasota, FL 34232
Tel: +1 941 256 3541
Fax: +1 941 256 3832

**Spectrum Dynamics
Medical Japan K.K.**
Uchikanda TK building 6F
South, 1-5-13 Uchikanda
Chiyoda-ku, Tokyo Japan
Tel: +81 3 5843-9304
Fax: +81 3 5843-9305